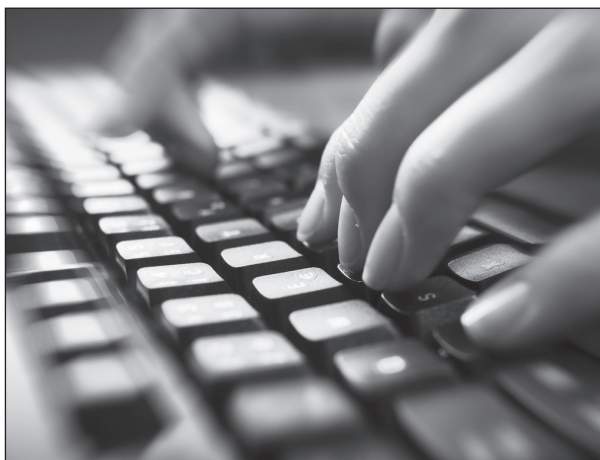


COMPUTER REQUIREMENTS

- **A computer capable of running current software and web browsers.**
 - For PC: Windows XP or higher
 - For Mac: Mac OS X, version 10.3 or higher
- **Internet access**
 - 56 kbps modem (DSL or cable modem strongly recommended)
 - Web browser (Firefox 3 or higher)
- **Additional Software or Plug-ins:**
 - Microsoft Office 2000 or higher / Microsoft Open Office (alternative)
 - Adobe Acrobat Reader
- **Important Media Players**
 - Flash player
 - For PC user: Windows Media Player
 - For Mac user: Quick Time Player

Non-Profit Org.
US POSTAGE
PAID
Manchester, NH
Permit #6035



Additional program information is available on our website:

WWW.ANSELM.EDU/CNE



www.facebook.com/cne.saintanselm

SAINT ANSELM
COLLEGE
1889

CONTINUING NURSING EDUCATION
100 Saint Anselm Drive
Manchester, NH 03102-1310

Change Service Requested



www.facebook.com/cne.saintanselm

visit us online:
www.anselm.edu/cne

SIMUL-CERT 2019-20



2019-2020 HEALTHCARE SIMULATION EDUCATOR CERTIFICATE

Provided by:



SAINT ANSELM
COLLEGE
1889

CONTINUING NURSING EDUCATION
Committed to Advancing the Practice of Nursing

Manchester, NH

PROGRAM DESCRIPTION

DESCRIPTION: This innovative hybrid online certificate program is designed to explore the various components necessary to develop and run simulation scenarios within an academic or clinical setting.

WHO: Any nurse practicing in an education role who is interested in developing or working in a simulation program. This would be applicable to nurse educators in academia or healthcare facilities, preceptors, mentors, or staff nurses who are interested in learning more about this teaching pedagogy.

The content will provide the nuts and bolts of simulation to include how to assess educational needs, develop, implement and evaluate simulation experiences.

WHAT: In order to receive this 60-hour certificate (equal to 60 contact hours), completion of the four modules is required. Each module is 15 contact hours and is taught in a hybrid format: 6 hours classroom, 9 hours online utilizing discussion boards and case studies, and required reading over the course of 4 weeks in an asynchronous manner.

CANCELLATION: A \$30 processing fee will be charged when cancelled at least 7 business days prior to conference. No refunds given with less than 7-day notice.

QUESTIONS?

Please contact Gina Gulino-Payne at 603-641-7086 or ggulinopayne@anselm.edu, To register, please visit our website at www.anselm.edu/cne.

Saint Anselm College is an approved provider of continuing nursing education by the Northeast Multistate Division, an accredited approver by the American Nurses Credentialing Center's Commission on Accreditation.

WWW.ANSELM.EDU/CNE

SCHEDULE: 2019-2020

MODULE 3: DESIGNING AND IMPLEMENTING SIMULATION SCENARIOS

SEPTEMBER 27–OCTOBER 24, 2019
15 CONTACT HOURS • FEE: \$284

Friday, September 27: 8:30-4:00 pm at Saint Anselm College; remainder of program online

Topics include: nursing education simulation framework incorporating roles of facilitator and participant, educational practices, simulation outcomes and design characteristics.

MODULE 4: TRENDS IN HEALTHCARE AND USE OF SIMULATION TO IMPACT PATIENT OUTCOMES

NOVEMBER 15–DECEMBER 13, 2019
15 CONTACT HOURS • FEE: \$284

Friday, November 15: 8:30-4:00 pm at Saint Anselm College; remainder of program online

Topics include: evaluation instruments, current research and trends in outcomes, trends in simulation, utilization of resources.

MODULE 1: OVERVIEW OF SIMULATION

MARCH 6-APRIL 2, 2020
15 CONTACT HOURS • FEE: \$284

Friday, March 6: 8:30-4:00pm at Saint Anselm College; remainder of program online

Topics include: history, types of simulation, purpose, learning theory, learning styles, simulation lab resources

MODULE 2: ART OF DEBRIEFING

APRIL 24-MAY 21, 2020
15 CONTACT HOURS • FEE: \$284

Friday, April 24: 8:30-4:00 pm at Saint Anselm College; remainder of program online

Topics include: purpose and importance of debriefing, role of facilitator, rules of debriefing, types of debriefing

REGISTRATION FORM HEALTHCARE SIMULATION EDUCATION CERTIFICATE

MAIL: Saint Anselm College
Continuing Ed #1745
100 Saint Anselm Drive
Manchester, NH 03102-1310

PHONE: 603-641-7086,
credit card required

FAX: 603-641-7089
credit card required
ONLINE: www.anselm.edu/cne
credit card required

PLEASE PRINT CLEARLY OR TYPE.

Name _____

Credentials _____

Home Address _____

City _____ State _____ Zip _____

Home Phone (_____) _____

Work Phone (_____) _____

Email _____
REQUIRED FOR CONFIRMATION

Employing Agency _____

Address _____

City _____ State _____ Zip _____

MODULES

- ☐ **3. Designing and Implementing Simulation Scenarios • SEP 27–OCT 24, 2019** \$284
- ☐ **4. Trends in Healthcare and Use of Simulation to Impact Patient Outcomes • NOV 15–DEC 13, 2019** \$284
- ☐ **1. Overview of Simulation • MAR 6–APR 2, 2020** \$284
- ☐ **2. Art of Debriefing • APR 24–MAY 21, 2020** \$284

METHOD OF PAYMENT

- ☐ Check enclosed made payable to Saint Anselm College in the amount of \$ _____
 - ☐ I authorize the use of my credit card: ☐ VISA ☐ MasterCard
- Account # _____ Exp _____
- Amount Authorized: \$ _____ Date _____
- Signature _____

Cut along here